

The City of Akron needs your *HELP!*



ABOVE: Actual photo of build-up of fats, oils, and grease in a sanitary sewer.

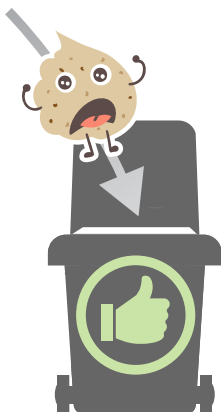
All efforts to reduce fats, oils, and grease from going down the drain are encouraged.

Please place all cooking fats, oils, and grease into a sealed container and dispose of in the garbage.

This will help to keep things flowing!

It takes all of us working together to help protect and preserve our environment!

Thank you for your understanding and assistance!



This brochure was prepared by Akron Water Reclamation Services and is intended for general information only.

For more information, please visit our website:



www.akronohio.gov/sewer



City of Akron

Water Reclamation Services
2460 Akron-Peninsula Road
Akron, OH 44313
(330) 375-2963
FOG@akronohio.gov



AKRON
WATER RECLAMATION SERVICES
Your Clean Water Resource.

Clean Sewers — Are — Happy Sewers



NAME:
"Foggy" Fats, Oils, & Grease

KNOWN FOR:
Building up in drains & sewer lines causing blockages resulting in sanitary sewer overflows into homes & waterways

Help us prevent sewer blockages and overflows due to Fats, Oils, and Grease (FOG).

Substances that can cause or lead to a blockage or obstruction of a sewer pipe are prohibited.

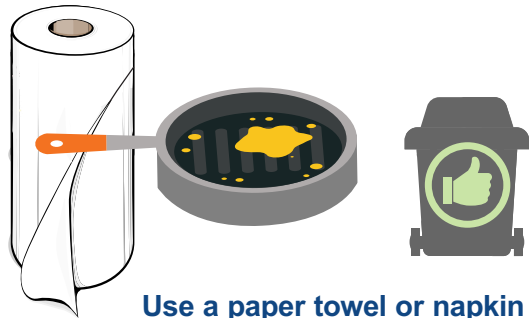
You can help prevent costly and unhealthy overflows by following a few simple steps:



Do not pour fats, oils, and grease down the drain! Don't rely on your garbage disposal and sink drain to get rid of grease.



Pour cooking oils and scrape grease into a container and dispose in the garbage. **Excess use of a garbage disposal can also contribute to clogged pipes.**

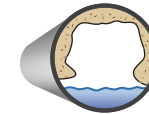


Use a paper towel or napkin to remove greasy leftovers from pots and dishes prior to washing in the sink or dishwasher.

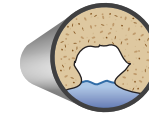


Food waste contains FOG. Place leftover foods, scraps, and fat trimmings in the garbage can for pick-up — **not in the garbage disposal.**

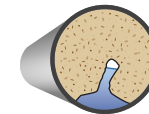
Sewer Blockage Formation



The start of a blocked pipe begins when grease and solids collect on the top and sides of the pipe interior.



The build-up increases over time when grease and other debris are washed down the drain.



Excessive accumulation will restrict the flow of wastewater and can result in a sanitary sewer overflow into homes and waterway.

Keep Our Sewers Happy!

